

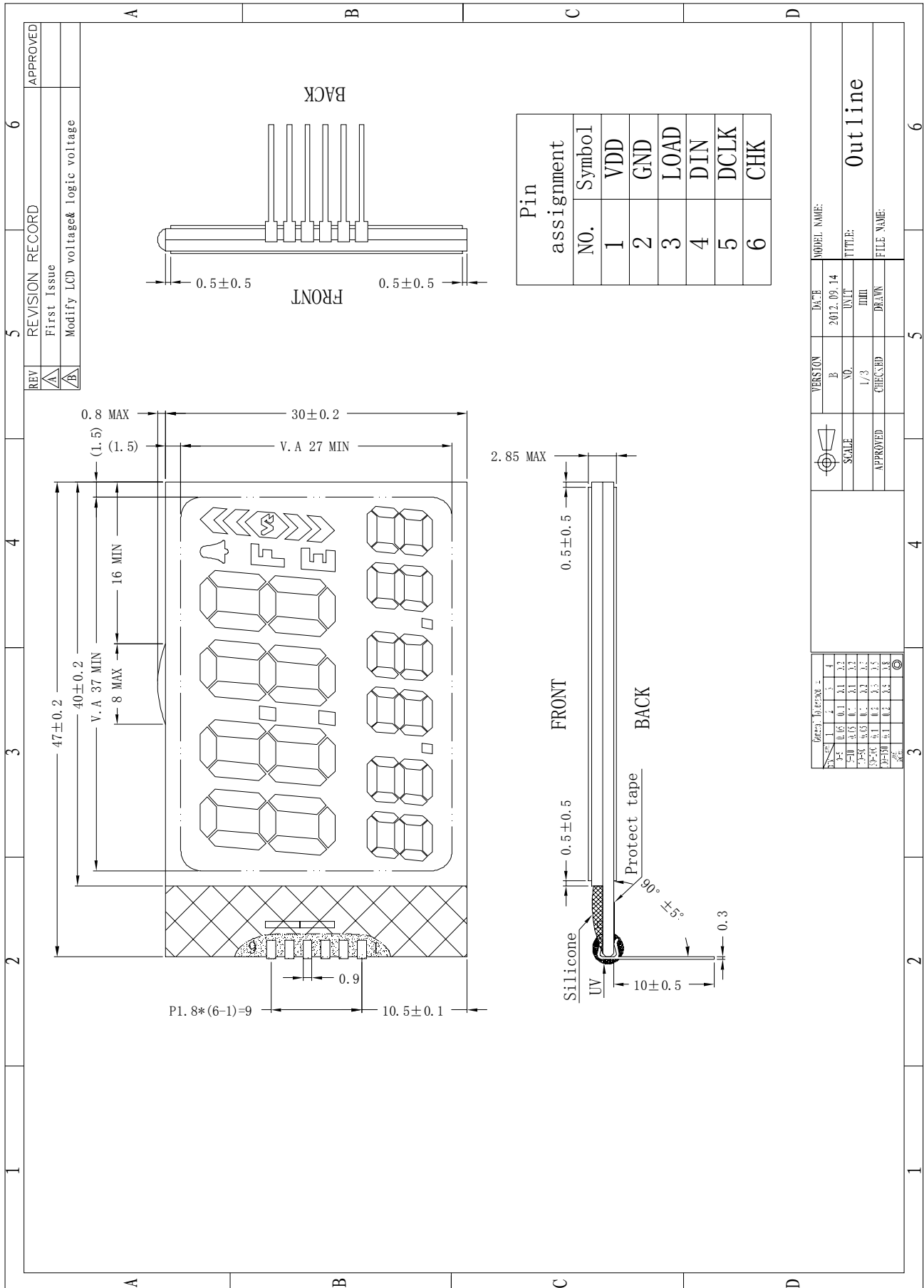
Revision Status

Version	Revise Date	Page	Content	Modified By
Ver. 1.0	2012.08.08		First Issued	
Ver. 1.1	2012.09.14		Modify LCD voltage& logic voltage	

1. General Specification

No.	Item	Specification	Unit
1	Outline Dimension	47(H) x 30(V) x 2.85MAX (D)	mm
2	Viewing Area	37(H) x 27(V)	mm
3	Display Type	TN	-
4	Viewing Direction	6 O'Clock	-
5	Polarizer Mode	Reflective/Positive(Antiglare)	-
6	LCD Drive method	STATIC	-
7	LCD Drive Voltage	3.0~5.0	V
8	Operation Temperature	From -40 to 85	°C
9	Storage Temperature	From -45 to 90	°C
10	Controller IC	ML1001-2U	-
11	Logic Power Supply Voltage	3.0~5.0	V

2. Outline Dimensions

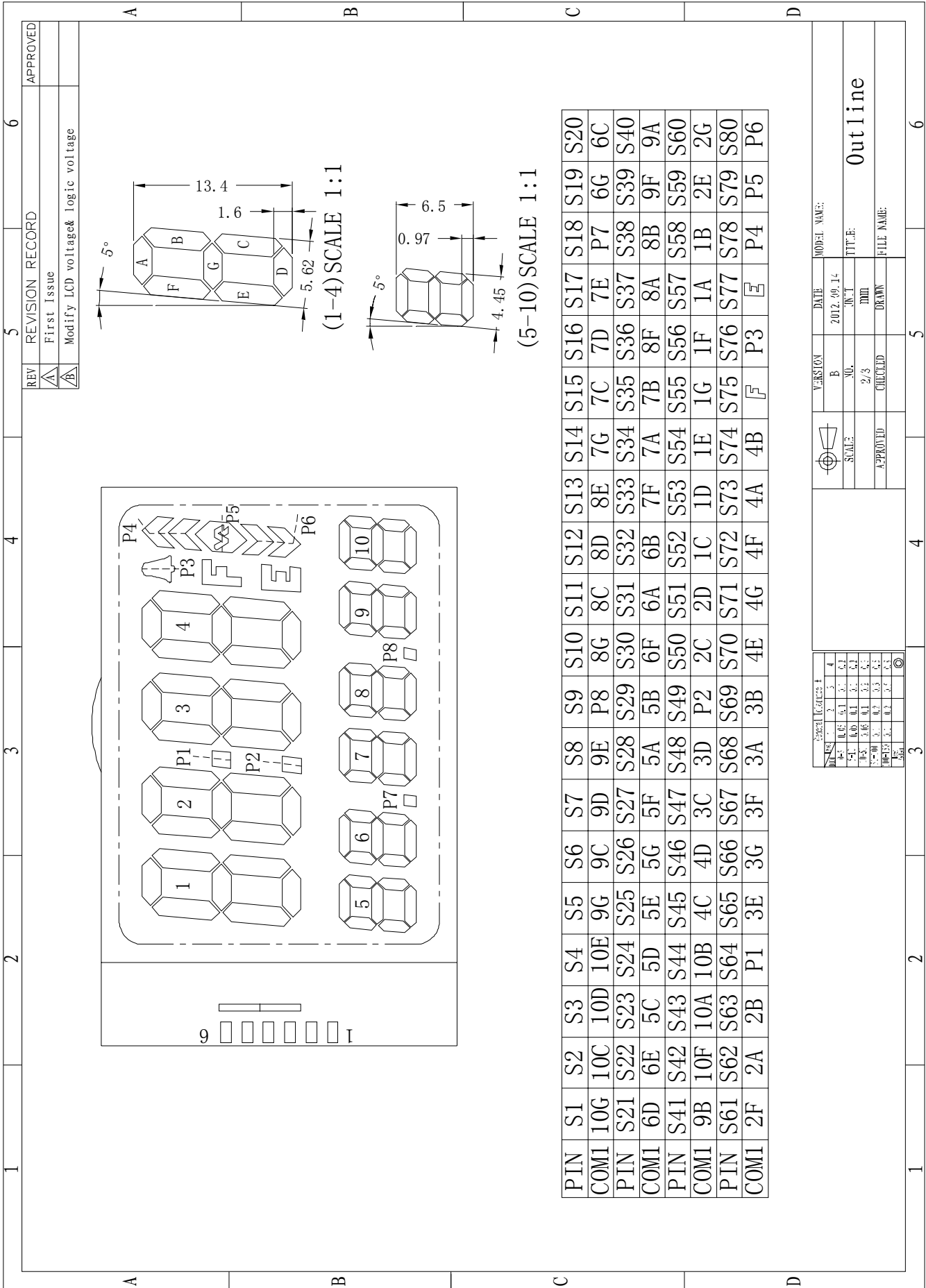


REV	REVISION RECORD	APPROVED
A	First Issue	
B	Modify LCD voltage & logic voltage	

MODEL NAME:	
VERSION	DATE
B	2012.09.14
SCALE	UNIT
1/3	MM
APPROVED	DRAWN
CHECKED	FILE NAME:

Outline

DATE	PERSON	NO.	REVISION
09.14	...	1	1
09.14	...	2	2
09.14	...	3	3
09.14	...	4	4
09.14	...	5	5
09.14	...	6	6



REV	REVISION RECORD	6
A	First Issue	APPROVED
B	Modify LCD voltage& logic voltage	

PIN	S1	S2	S3	S4	S5	S6	S7	S8	S9	S10	S11	S12	S13	S14	S15	S16	S17	S18	S19	S20
COM1	10G	10C	10D	10E	9G	9C	9D	9E	P8	8G	8C	8D	8E	7G	7C	7D	7E	P7	6G	6C
PIN	S21	S22	S23	S24	S25	S26	S27	S28	S29	S30	S31	S32	S33	S34	S35	S36	S37	S38	S39	S40
COM1	6D	6E	5C	5D	5E	5G	5F	5A	5B	6F	6A	6B	7F	7A	7B	8F	8A	8B	9F	9A
PIN	S41	S42	S43	S44	S45	S46	S47	S48	S49	S50	S51	S52	S53	S54	S55	S56	S57	S58	S59	S60
COM1	9B	10F	10A	10B	4C	4D	3C	3D	P2	2C	2D	1C	1D	1E	1G	1F	1A	1B	2E	2G
PIN	S61	S62	S63	S64	S65	S66	S67	S68	S69	S70	S71	S72	S73	S74	S75	S76	S77	S78	S79	S80
COM1	2F	2A	2B	P1	3E	3G	3F	3A	3B	4E	4G	4F	4A	4B	4F	P3	P4	P5	P6	P6

Version	B	DATE	2012-09-14
NO.	2/3	DATE	
CHECKED		DRAWN	
APPROVED		FILE NAME:	
SCALE		TITLE:	Outline

