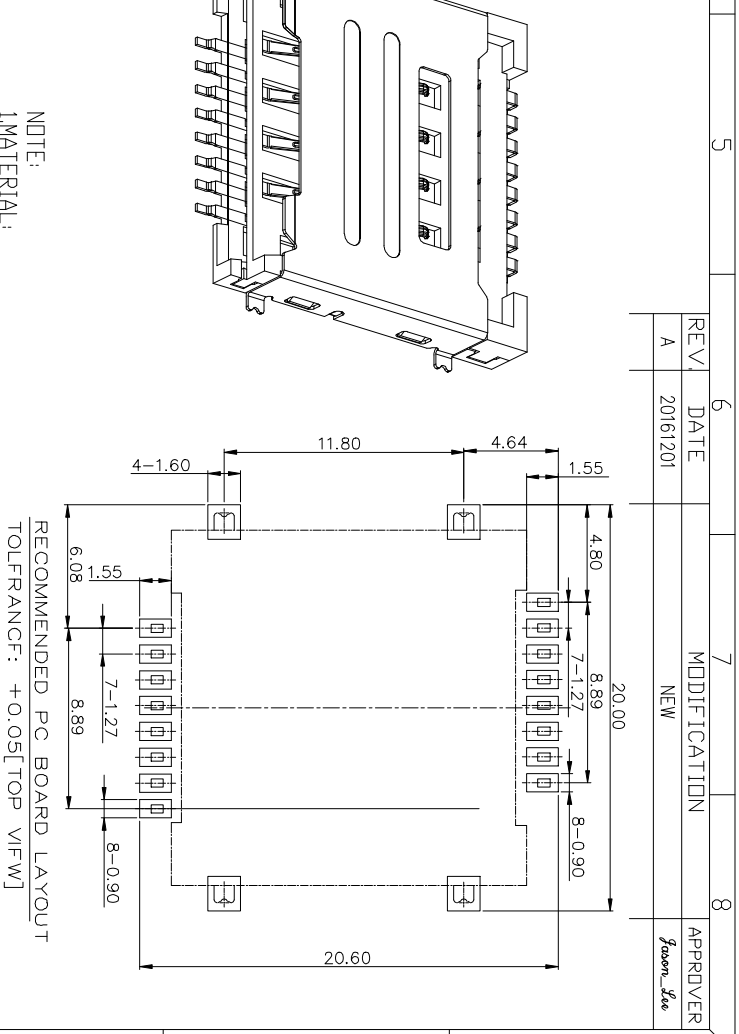


GENERAL TOLERANCE			UNITS	NAME:		
SELECT	TOL.	1	2	3	DUAL SIM CARD 8P	
X.XXX	±0.10	±0.05	±0.05	±0.05	PART NO.:	S157C-08200
X.XX	±0.15	±0.10	±0.05	±0.05	APPD.:	Jason
X.X	±0.20	±0.15	±0.10	±0.05	CHKD.:	Wcky
X	±0.30	±0.20	±0.15	±0.10	DR.:	JACK
ANGLE	±2°				DWG NO.:	
					ATOM-A03266	

NOTE:

- 1.MATERIAL:
 HOUSING: LCP BLACK UL94V-0
 CONTACT: COPPER ALLOY(C5210)
 SHELL: SUS304
- 2.PLATED
 CONTACT AREA GOLD FLASH PLATED OVER NI
 SOLDER TAIL 100μ*MIN SN PLATED OVER NI
 SHELL: NICKEL 30μ*PLATED OVER ALL GOLD
 FLASH PLATED ON SOLDER AREA
- 3.SPECIFICATION NOTES:
 CONTACT RESISTANCE: 100 milliohms MAX
 CURRENT RATING: 0.5A
 VDL TAGE RATING: 250V
 DIELECTRIC WITHSTANDING VDL TAGE: 500V AC



RECOMMENDED PC BOARD LAYOUT
 TOLFRANCF: +0.05[TOP VIFW]

REV	DATE	MODIFICATION	APPROVER
A	20161201	NEW	Jason.Jiao